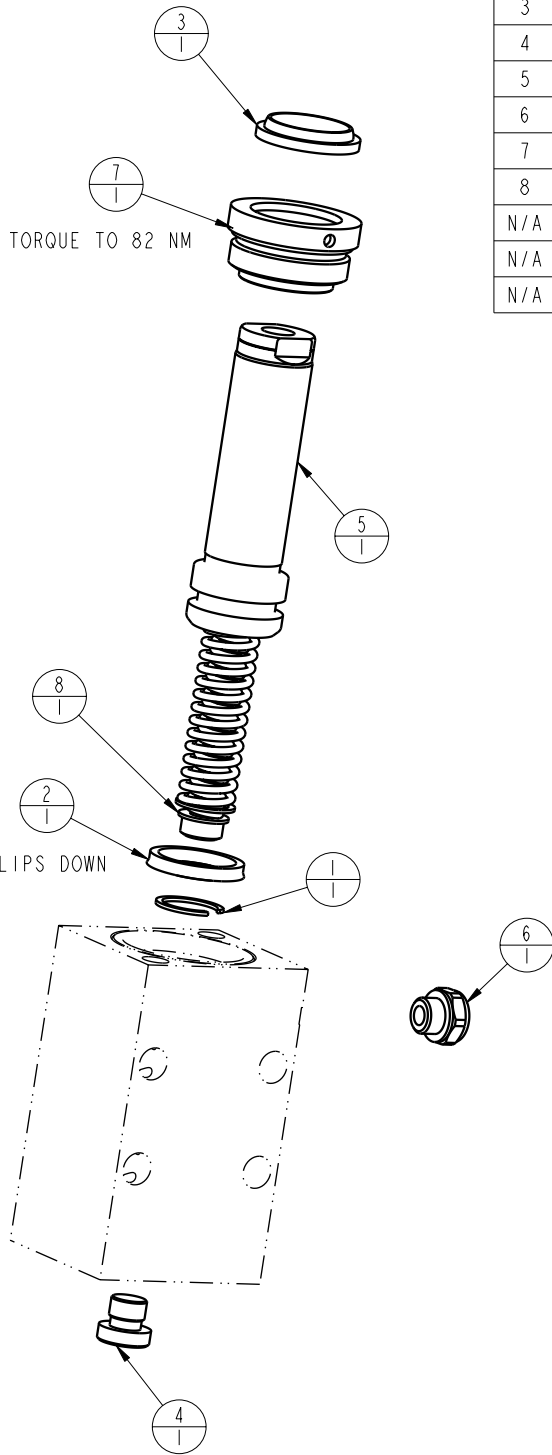


MODEL NO.			MODEL NAME
42011012			ASSY, CYL, BB, 17,8kN, 38,1 STRK, SA
NO.	QTY	PART NO.	DESCRIPTION
1	1	23050012	SNAP RING, INTERNAL
2	1	39010014	SEAL, BEVEL, 13/16 x 3/32 x 1
3	1	39012008	WIPER, SNAP-IN, (13/16)
4	1	43068004	PLUG, 1/8 BSPP
5	1	48011504	PISTON, CYL., 17,8 kN, 38,1 STRK
6	1	49001904	BREATHER, 1/8 BSPP
7	1	82031002	GLAND, CYL, 3900 & 17.8 KN
8	1	92060007	SPRING, PAK
N/A	N/A	46000028	KIT, SEAL, BB, 17,8KN, SA
N/A	N/A	6V200110	KIT, SEAL, BB, 17,8KN, SA, FKM
N/A	N/A	46100040	KIT, SPRING, BB, 17,8 KN, 38,1 STRK



3. SPRING PAK AND RETAINING RING ARE INCLUDED IN THE SPRING KIT.
2. ALL SEALS, O-RINGS, AND WIPERS ARE INCLUDED IN THE STANDARD OR FKM SEAL KIT.
1. APPLY LUBRICANT TO ALL SEALS PRIOR TO ASSEMBLY (DO NOT USE SILICONE TYPE LUBRICANTS).

NOTE:

PARTS LIST



VEKTEK, INC.
1334 E. SIXTH AVE. P.O. BOX 625
EMPORIA, KS. 66801 U.S.A.

ASSEMBLIES AFFECTED
42-0110-12

PARTS LIST, BB, 17,8 KN, SA

B	2625	RELEASE	GAR	3/5/14
REV	IN ACCORDANCE WITH ECN	EFFECTIVE DATE	REVISED BY	DATE
DRW BY:	ROMINE	DRAWING STATUS: Released		
DATE:	04-10-08	PRODUCTION APPROVED FOR RELEASED STATUS ONLY		

SIZE
A MPLV2087

REV
B

FORM FEG035_PL_ASIZE, REV. B

SHEET 1 OF 1